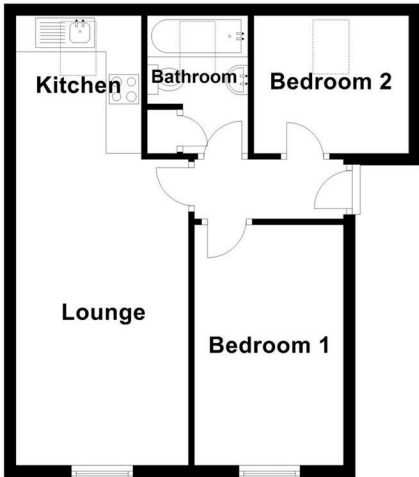




Arthur Wellesley House 17 Palace Gate,  
Irthlingborough, Wellingborough, NN9 5FD



Not to scale. For illustrative purposes only

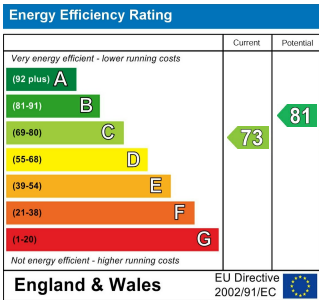


**For auction £75,000**

FOR SALE BY AUCTION ON WEDNESDAY 18TH FEBRUARY 2026 COMMENCING AT 11AM  
- SALE VIA A LIVE STREAMED AUCTION  
GUIDE PRICE: £75,000 - £85,000  
VIEWINGS - BY APPOINTMENT ONLY - PLEASE CALL 01604 25977

A well-presented two-bedroom top-floor apartment ideally located in the heart of Irthlingborough. This modern apartment features contemporary open-plan living with a spacious lounge, kitchen, and dining area, two well-proportioned bedrooms, and a stylish family bathroom. Positioned within easy walking distance of local shops, amenities, and transport links, the property offers convenient town-centre living. Further benefits include one allocated off-road parking space and vacant possession, making it an excellent opportunity for first-time buyers or investors.

You may download, store and use the material for your own personal use and research. You may not republish, retransmit, redistribute or otherwise make the material available to any party or make the same available on any website, online service or bulletin board of your own or of any other party or make the same available in hard copy or in any other media without the website owner's express prior written consent. The website owner's copyright must remain on all reproductions of material taken from this website.





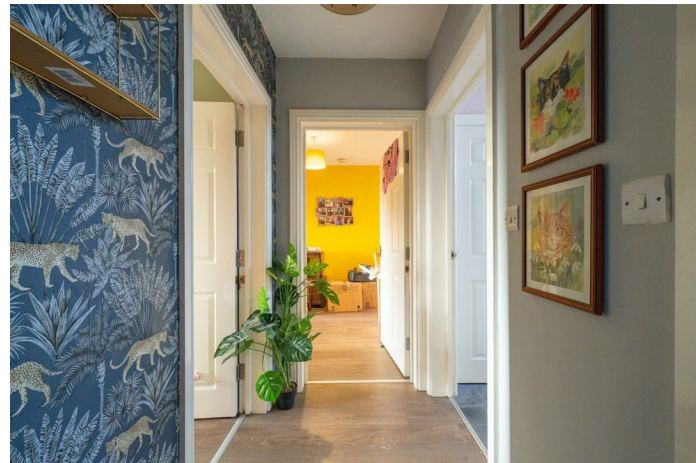
# Arthur Wellesley House 17 Palace Gate, Irthlingborough, Wellingborough, NN9 5FD

## ACCOMMODATION

### ENTRANCE HALL

8'04 x 3'09

Entered via a solid wood front door from the communal entrance hall, there is a wood effect floor and doors leading to:-



### LOUNGE/DINER/KITCHEN



### KITCHEN AREA

8'03 x 7'00

With a Velux window to the rear, there is a range of floor and wall-mounted cabinets, with composite worktops. There is a stainless steel sink and drainer, an electric hob, oven below and extractor above. There is space for appliances and an entry phone system for the front door.



### LOUNGE/DINER

17'00 x 9'07

Open to the kitchen, there is a dormer window to the front elevation with TV and telephone points connected.



### BEDROOM ONE

13'04 x 8'04

Space for a double bed with a window to the front with wood effect floor.



### BEDROOM TWO

8'07 x 7'08

A Velux window to the rear with a wood-effect floor.



### BATHROOM

7'07 x 5'07

Suite comprising bath with shower over, WC and hand wash basin. There is a window to the rear and a door to an airing cupboard.



### OUTSIDE

### PARKING

There is one allocated off-road parking space.

### SERVICES

Main water and electric, none of these have been tested.

### TERMS OF THE LEASE

The property is offered on a 125 year lease dated 1st Jan 2006. The service charge is £1,621 per annum and a ground rent of £200 per annum.

### PRICE INFORMATION

\*Guides are provided as an indication of each seller's minimum expectation. They are not necessarily figures which a property will sell for and may change at any time prior to the auction. Each property will be offered subject to a Reserve (a figure below which the Auctioneer cannot sell the property during the auction) which we expect will be set within the Guide Range or no more than 10% above a single figure Guide. Additional Fees and Disbursements will be charged to the buyer - see individual property details and Special Conditions of Sale for actual figures.

### BUYERS ADMINISTRATION CHARGE

The purchaser will be required to pay an administration charge of £900 (£750 plus VAT).

### BUYERS PREMIUM CHARGE

The purchaser will be required to pay a buyers premium charge of £1,800 (£1,500 plus VAT).

For further information on viewing call 01604 259773